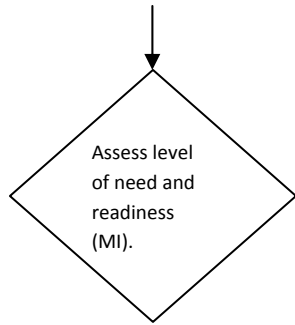


**GANG INTERVENTION: Resident is identified as involved in gang activity, or as a gang member**



We strongly suggest that this sequence NOT be implemented until the first 80 sessions of Core A have been completed with each youth.

**Core A:** 130-session core resource provided to all residents. The full resource is recommended. The WDYT elements are critical to the gang intervention process, and build sequentially (1-100) to more gang intensive subject matter. Core lessons #60-80 are especially gang-intensive.

A short resource, "Making decisions about gangs," is provided all youth at reception.

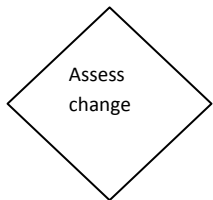
**Core B:** this is provided all residents. The Core B resource is a 50-session loop, and residents may attend when not at special programming during these times. In general, gang-active youth who are also violent, should receive the full dosage of this resource while incarcerated.

If needs more intensive MI preparation use Core C1.  
Core C2 (CBT resource) - generally helpful for gang-active youth (specifically addressing internal risk factors)

Gang contract #1  
GG-MI -1 resource  
GG level 1 resources (link) for all residents in this track.

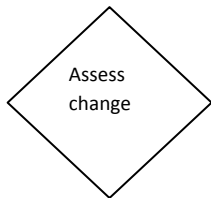
"What do you need?" (needs and gangs)  
"What was on your mind?" (gang mind-set)  
(up to 14 sessions)

These resources provide up to 42 sessions. Can be used 1:1 or group. Suggest counselor using these materials be selected for gang specialization.



GG -MI -2 resource  
GG level 2 resources (link)  
Gang contract #2

"Gang Intervention Resources" (GG13, including ST6g).  
(up to 16 sessions)

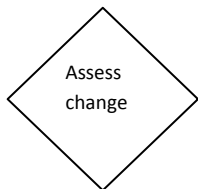


GG -MI -3 resource  
Gang contract #3

"Who wants to be at risk?" (10 sessions)

The series of graduated "contracts" for addressing the issue of leaving the gang.

Competency checklists may be used to document outcomes.



GG -MI -4 resource: confidence, self-efficacy, specific action plans

Gang contract #4  
Workbook GG14 (for 1:1 use only) is designed to assist youth in leaving the gang. Suggest counselor using these materials be selected for gang specialization.

**COLOR KEY**

SOCIAL WORKERS
YOUTH SPECIALISTS
SPECIALISTS - AS ASSIGNED
MENTAL HEALTH PROFESSIONALS
RECEPTION STAFF